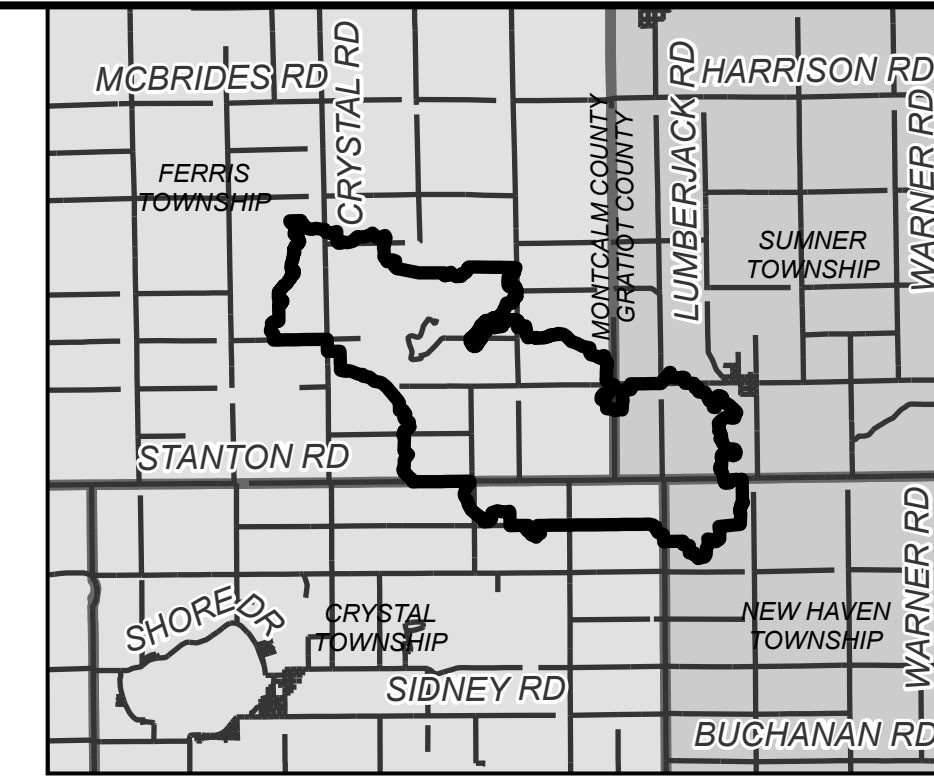
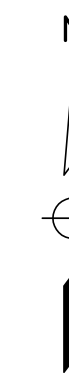
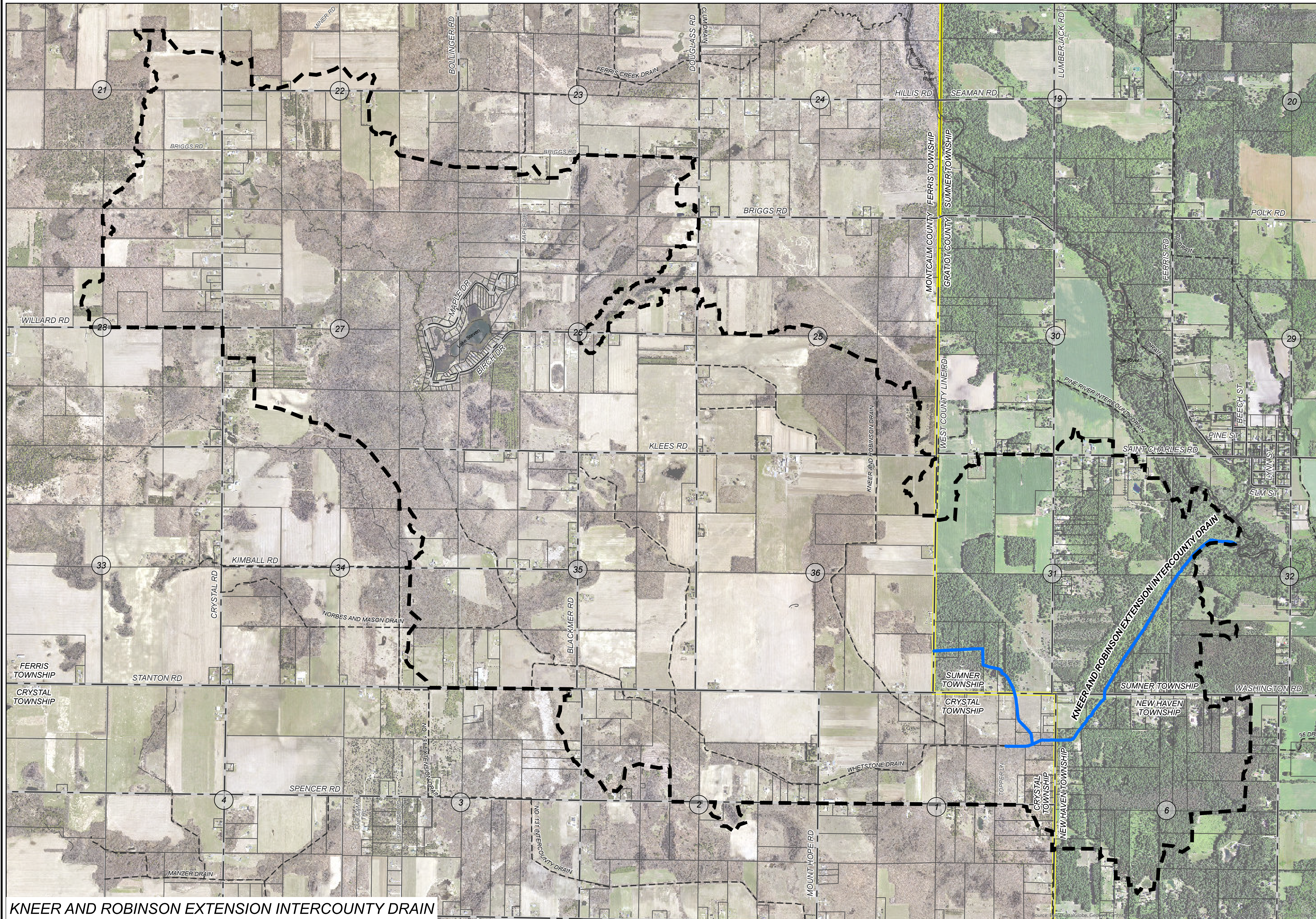


KNEER AND ROBINSON EXTENSION INTERCOUNTY DRAIN MONTCALM COUNTY, MICHIGAN

MICHIGAN DEPARTMENT OF AGRICULTURE AND RURAL DEVELOPMENT - BRADY HARRINGTON, P.E.
GRATIOT COUNTY DRAIN COMMISSIONER - BERNARD J. BARNES
MONTCALM COUNTY DRAIN COMMISSIONER - SANDY RAINES



AREA MAP
NOT TO SCALE



LEGEND

- DRAINAGE DISTRICT BOUNDARY
- APPROXIMATE OPEN DRAIN LOCATION
- APPROXIMATE TILE DRAIN LOCATION
- OTHER DRAINS
- OTHER WATERCOURSES
- STATE ROADS
- COUNTY ROADS
- LOCAL ROADS
- RAILROAD
- MUNICIPALITY BOUNDARY
- COUNTY BOUNDARY

DRAINAGE DISTRICT BREAKDOWN PROPERTY OWNERS ASSESSABLE ACREAGE

GRATIOT COUNTY	
NEW HAVEN TOWNSHIP	331.43 AC.
SUMNER TOWNSHIP	709.52 AC.
MONTCALM COUNTY	
CRYSTAL TOWNSHIP	601.95 AC.
FERRIS TOWNSHIP	3,605.43 AC.

TOTAL ACREAGE IN DISTRICT 5,248.33 AC.

LENGTH OF DRAIN
KNEER AND ROBINSON EXTENSION INTERCOUNTY DRAIN 11,274 FT.

20% GRATIOT COUNTY
80% MONTCALM COUNTY
DAY OF REVIEW OF DRAINAGE DISTRICT BOUNDARY:

DATE: _____
APPROVED: _____

BRADY HARRINGTON, P.E.
INTERCOUNTY DRAINAGE BOARD CHAIRMAN

PLF	MARK	DAY OF REVIEW OF APPOINTMENTS	03/26/2019
BY	MARK	REVISIONS	DATE

THE WORK REPRESENTED BY THIS DRAWING WAS DESIGNED BY THE ENGINEER FOR THIS SPECIFIC APPLICATION AND SPECIFIC LOCATION DESCRIBED HEREON IN ACCORDANCE WITH THE CONDITIONS PREVALENT AT THE TIME THE DESIGN WAS DONE. THE ENGINEER DOES NOT GUARANTEE AND WILL NOT BE LIABLE FOR ANY OTHER LOCATION, CONDITION, DESIGN OR PURPOSE.

KNEER AND ROBINSON EXTENSION INTERCOUNTY DRAIN
GRATIOT AND MONTCALM COUNTIES, MICHIGAN

DRAINAGE DISTRICT MAP

ST. JOHN'S OFFICE
1400 Zeeb Drive
St. Johns, MI 48879
Tel. 989-224-2355
www.SpicerGroup.com

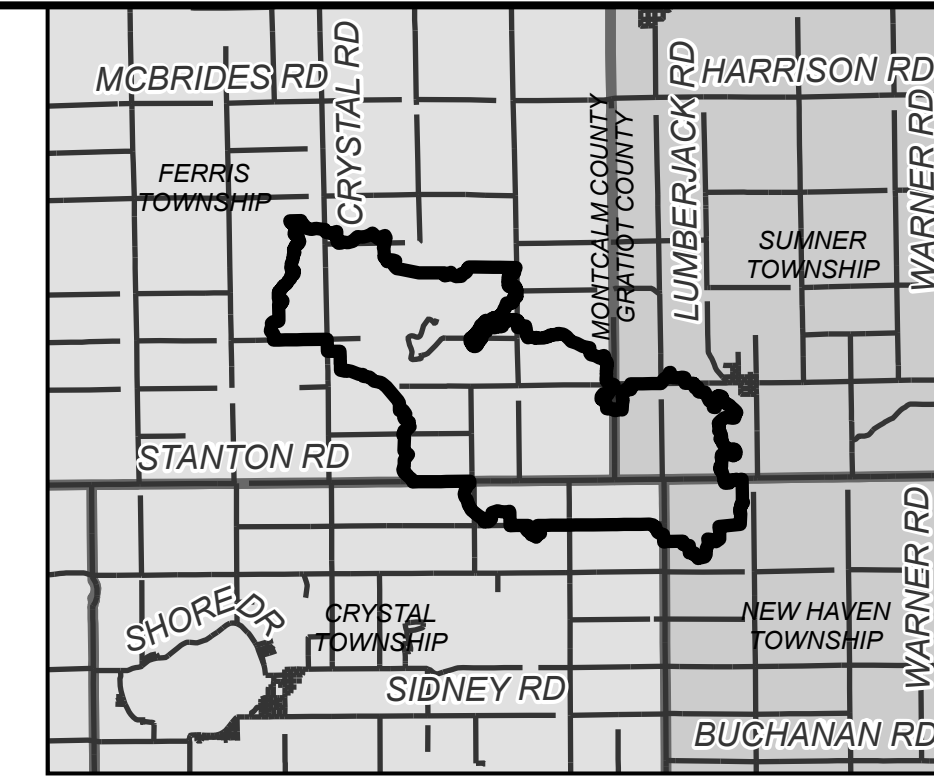
DE BY: MKT	CH BY: MKT	PROJECT NO.
DR BY: MKT	APP BY: PLF	126323SG2018

STDS.	SHEET 1 OF 1	DR
DATE: SEPTEMBER 2019	FILE NO.	1
SCALE 1"=1,000'		

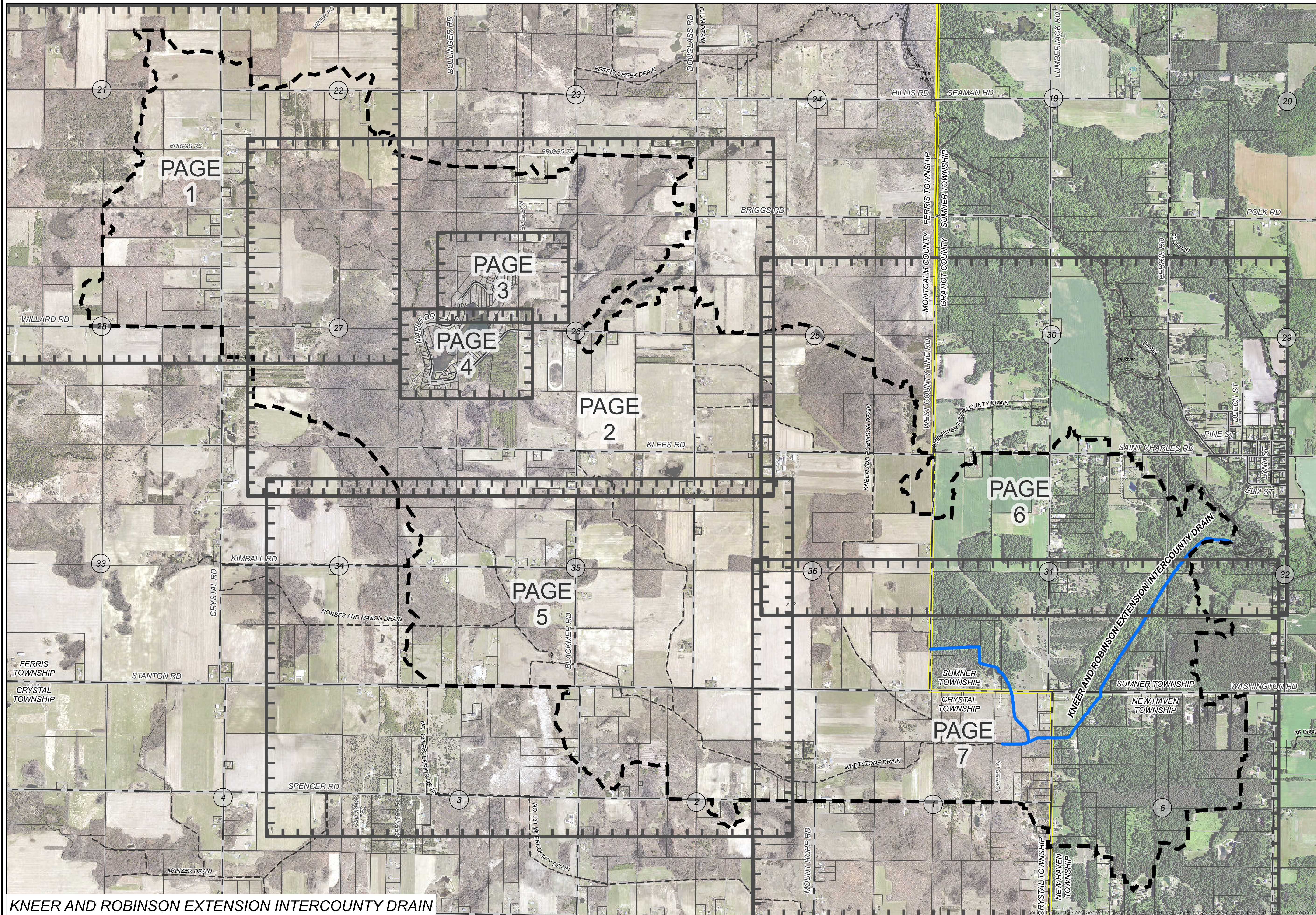
KNEER AND ROBINSON EXTENSION INTERCOUNTY DRAIN

KNEER AND ROBINSON EXTENSION INTERCOUNTY DRAIN MONTCALM COUNTY, MICHIGAN

MICHIGAN DEPARTMENT OF AGRICULTURE AND RURAL DEVELOPMENT - BRADY HARRINGTON, P.E.
GRATIOT COUNTY DRAIN COMMISSIONER - BERNARD J. BARNES
MONTCALM COUNTY DRAIN COMMISSIONER - SANDY RAINES



AREA MAP
NOT TO SCALE



LEGEND

- DRAINAGE DISTRICT BOUNDARY
- APPROXIMATE OPEN DRAIN LOCATION
- APPROXIMATE TILE DRAIN LOCATION
- OTHER DRAINS
- OTHER WATERCOURSES
- STATE ROADS
- COUNTY ROADS
- LOCAL ROADS
- RAILROAD
- MUNICIPALITY BOUNDARY
- COUNTY BOUNDARY

DRAINAGE DISTRICT BREAKDOWN PROPERTY OWNERS ASSESSABLE ACREAGE

GRATIOT COUNTY	
NEW HAVEN TOWNSHIP	331.43 AC.
SUMNER TOWNSHIP	709.52 AC.
MONTCALM COUNTY	
CRYSTAL TOWNSHIP	601.95 AC.
FERRIS TOWNSHIP	3,605.43 AC.
TOTAL ACREAGE IN DISTRICT	5,248.33 AC.

LENGTH OF DRAIN
KNEER AND ROBINSON EXTENSION INTERCOUNTY DRAIN 11,274 FT.

20% GRATIOT COUNTY
80% MONTCALM COUNTY

DAY OF REVIEW OF DRAINAGE DISTRICT BOUNDARY:

DATE: _____

APPROVED: _____

BRADY HARRINGTON, P.E.
INTERCOUNTY DRAINAGE BOARD CHAIRMAN

PLF	BY	MARK	DATE OF REVIEW OF APPOINTMENTS	03/26/2019
			REVISIONS	DATE

THE WORK REPRESENTED BY THIS DRAWING WAS DESIGNED BY THE ENGINEER FOR THIS SPECIFIC APPLICATION AND SPECIFIC LOCATION DESCRIBED HEREON IN ACCORDANCE WITH THE CONDITIONS PREVALENT AT THE TIME THE DESIGN WAS DONE. THE ENGINEER DOES NOT GUARANTEE AND WILL NOT BE LIABLE FOR ANY OTHER LOCATION, CONDITION, DESIGN OR PURPOSE.

KNEER AND ROBINSON EXTENSION INTERCOUNTY DRAIN
GRATIOT AND MONTCALM COUNTIES, MICHIGAN

DRAINAGE DISTRICT MAP



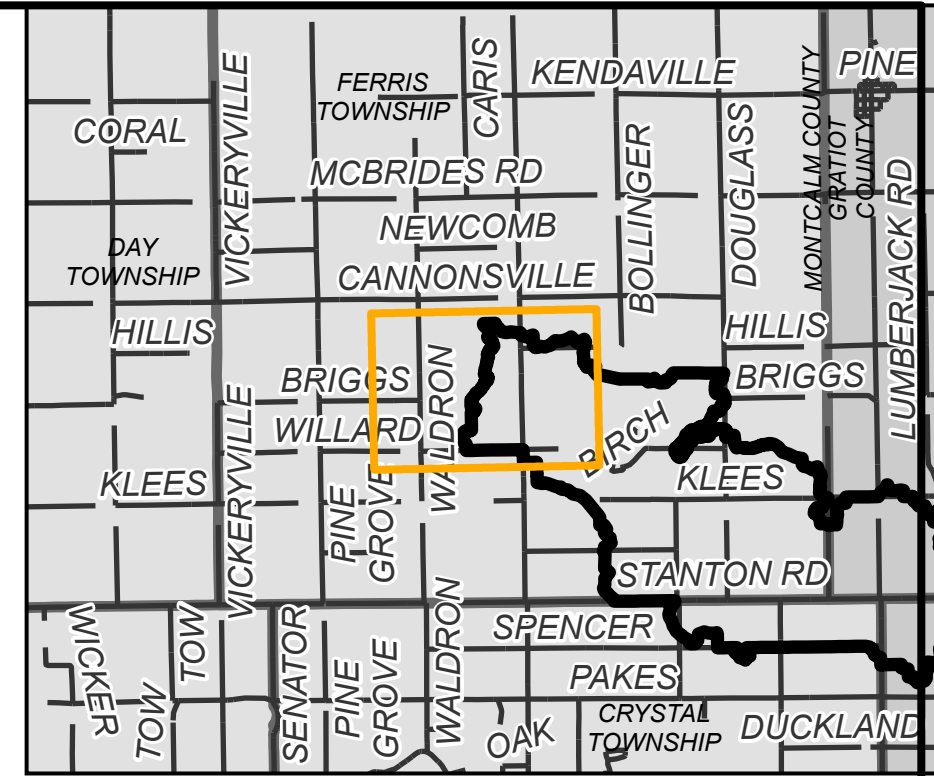
DE BY: MKT CH BY: MKT PROJECT NO. 126323SG2018
DR BY: MKT APP BY: PLF

STDS. SHEET 1 OF 1 DR 1
DATE SEPTEMBER 2019 FILE NO. 1
SCALE 1"=1,000'

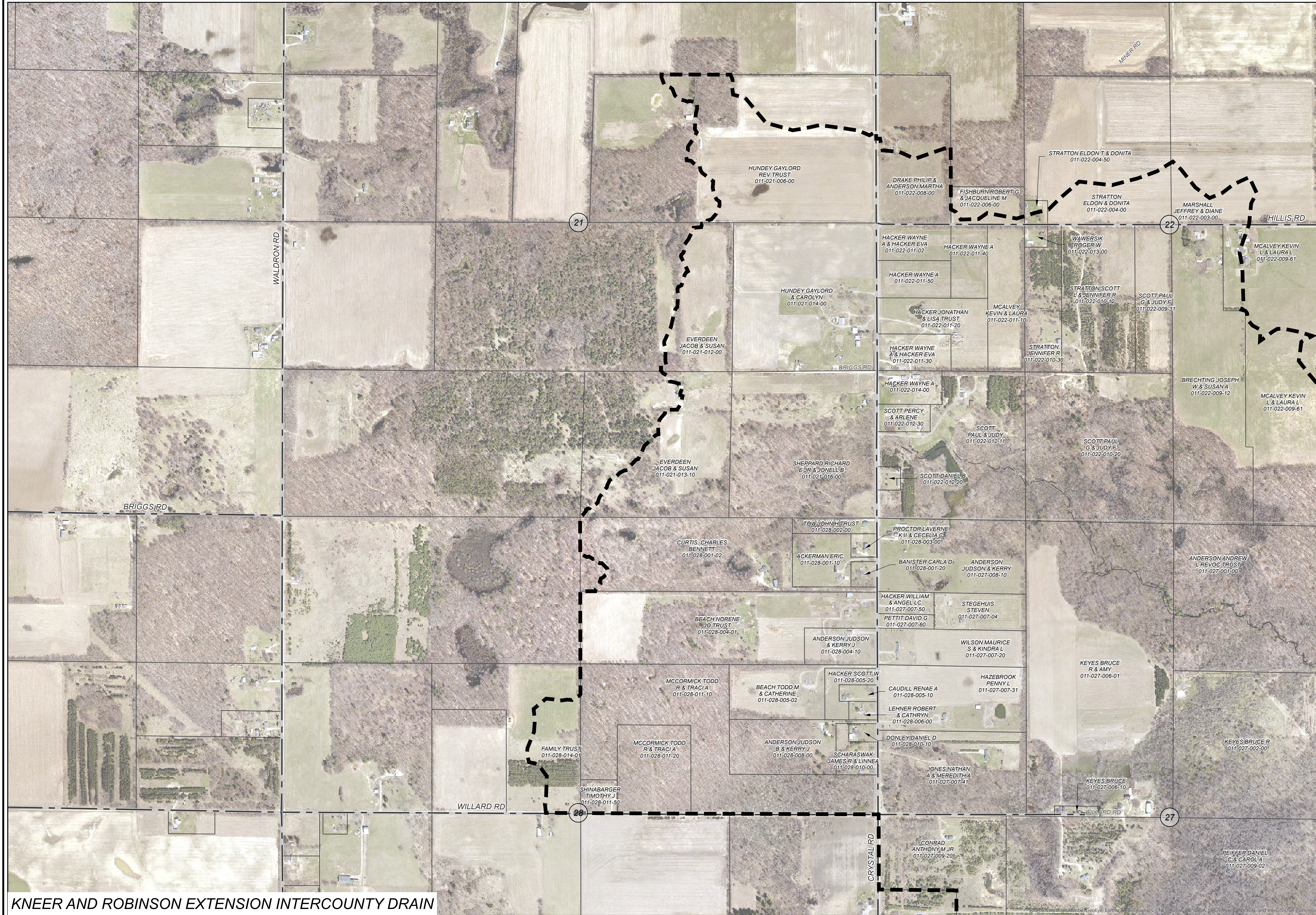
PATH: C:\USER\MATCH\THEIR\WORKSPACE\SPICER GROUP\PROJECTS\MONTCALM\DRAINAGE\GSD\MONTCALM_COUNTY\MONTCALM_COUNTY_DRAINAGE_03_26_2019_19.BY: MATCH\MELBY

KNEER AND ROBINSON EXTENSION INTERCOUNTY DRAIN MONTCALM COUNTY, MICHIGAN

MICHIGAN DEPARTMENT OF AGRICULTURE AND RURAL DEVELOPMENT - BRADY HARRINGTON, P.E.
GRATIOT COUNTY DRAIN COMMISSIONER - BERNARD J. BARNES
MONTCALM COUNTY DRAIN COMMISSIONER - SANDY RAINES



AREA MAP
NOT TO SCALE



- LEGEND**
- DRAINAGE DISTRICT BOUNDARY
 - APPROXIMATE OPEN DRAIN LOCATION
 - APPROXIMATE TILE DRAIN LOCATION
 - OTHER DRAINS
 - OTHER WATERCOURSES
 - STATE ROADS
 - COUNTY ROADS
 - LOCAL ROADS
 - RAILROAD
 - MUNICIPALITY BOUNDARY
 - COUNTY BOUNDARY

DRAINAGE DISTRICT BREAKDOWN
PROPERTY OWNERS ASSESSABLE ACREAGE

GRATIOT COUNTY	
NEW HAVEN TOWNSHIP	331.43 AC.
SUMNER TOWNSHIP	709.52 AC.
MONTCALM COUNTY	
CRYSTAL TOWNSHIP	601.95 AC.
FERRIS TOWNSHIP	3,605.43 AC.
TOTAL ACREAGE IN DISTRICT	5,248.33 AC.

LENGTH OF DRAIN
KNEER AND ROBINSON EXTENSION INTERCOUNTY DRAIN 11,274 FT.
20% GRATIOT COUNTY
80% MONTCALM COUNTY

DAY OF REVIEW OF DRAINAGE DISTRICT BOUNDARY:
DATE: _____
APPROVED: _____

BRADY HARRINGTON, P.E.
INTERCOUNTY DRAINAGE BOARD CHAIRMAN

PLF	MARK	DAY OF REVIEW OF APPOINTMENTS	03/26/2019
BY	MARK	REVISIONS	DATE

THE WORK REPRESENTED BY THIS DRAWING WAS DESIGNED BY THE ENGINEER FOR THIS SPECIFIC APPLICATION AND SPECIFIC LOCATION DESCRIBED HEREON IN ACCORDANCE WITH THE CONDITIONS PREVALENT AT THE TIME THE DESIGN WAS DONE. THE ENGINEER DOES NOT GUARANTEE AND WILL NOT BE LIABLE FOR ANY OTHER LOCATION, CONDITION, DESIGN OR PURPOSE.

KNEER AND ROBINSON EXTENSION INTERCOUNTY DRAIN
GRATIOT AND MONTCALM COUNTIES, MICHIGAN

DRAINAGE DISTRICT MAP

ST. JOHN'S OFFICE
1400 Zeeb Drive
St. Johns, MI 48879
Tel. 989-224-2355
www.SpicerGroup.com

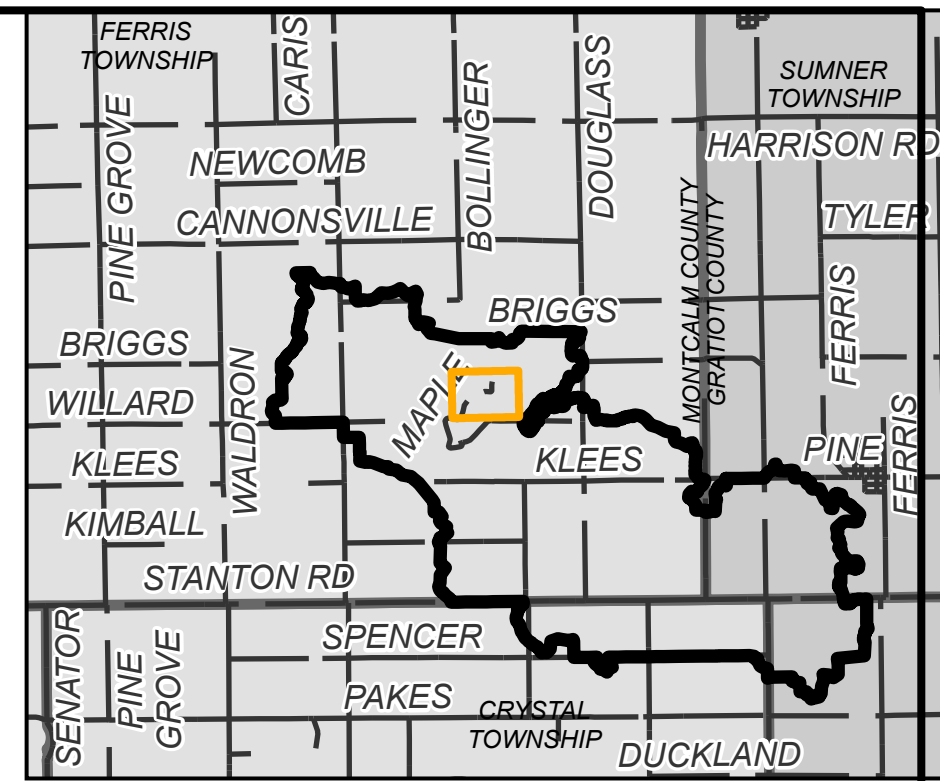
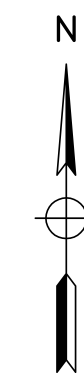
DE BY: MKT	CH BY: MKT	PROJECT NO.
DR BY: MKT	APP BY: PLF	126323SG2018
STDS.	SHEET 1 OF 7	DR 1
DATE: SEPTEMBER 2019	FILE NO.	
SCALE: 1"=400'		

PATH: C:\USER\MATCH\THEIR\CONTRACTS\SPICER GROUP\PROJECTS\MONTCALM\KNEER AND ROBINSON EXTENSION INTERCOUNTY DRAIN\DRAWINGS\DRAINAGE DISTRICT MAP.DWG, PRINTED ON: 8/20/2019, BY: MATCH\THEIR

KNEER AND ROBINSON EXTENSION INTERCOUNTY DRAIN

KNEER AND ROBINSON EXTENSION INTERCOUNTY DRAIN MONTCALM COUNTY, MICHIGAN

MICHIGAN DEPARTMENT OF AGRICULTURE AND RURAL DEVELOPMENT - BRADY HARRINGTON, P.E.
GRATIOT COUNTY DRAIN COMMISSIONER - BERNARD J. BARNES
MONTCALM COUNTY DRAIN COMMISSIONER - SANDY RAINES



AREA MAP
NOT TO SCALE

LEGEND

- DRAINAGE DISTRICT BOUNDARY
- APPROXIMATE OPEN DRAIN LOCATION
- APPROXIMATE TILE DRAIN LOCATION
- OTHER DRAINS
- OTHER WATERCOURSES
- STATE ROADS
- COUNTY ROADS
- LOCAL ROADS
- RAILROAD
- MUNICIPALITY BOUNDARY
- COUNTY BOUNDARY

DRAINAGE DISTRICT BREAKDOWN PROPERTY OWNERS ASSESSABLE ACREAGE

GRATIOT COUNTY	
NEW HAVEN TOWNSHIP	331.43 AC.
SUMNER TOWNSHIP	709.52 AC.
MONTCALM COUNTY	
CRYSTAL TOWNSHIP	601.95 AC.
FERRIS TOWNSHIP	3,605.43 AC.
TOTAL ACREAGE IN DISTRICT	5,248.33 AC.

LENGTH OF DRAIN
KNEER AND ROBINSON EXTENSION INTERCOUNTY DRAIN 11,274 FT.
20% GRATIOT COUNTY
80% MONTCALM COUNTY
DAY OF REVIEW OF DRAINAGE DISTRICT BOUNDARY:

DATE: _____
APPROVED: _____

BRADY HARRINGTON, P.E.
INTERCOUNTY DRAINAGE BOARD CHAIRMAN

PLF	DAY OF REVIEW OF APPORTIONMENTS	03/26/2019
BY	MARK	REVISIONS DATE

THE WORK REPRESENTED BY THIS DRAWING WAS DESIGNED BY THE ENGINEER FOR THIS SPECIFIC APPLICATION AND SPECIFIC LOCATION DESCRIBED HEREON IN ACCORDANCE WITH THE CONDITIONS PREVALENT AT THE TIME THE DESIGN WAS DONE. THE ENGINEER DOES NOT GUARANTEE AND WILL NOT BE LIABLE FOR ANY OTHER LOCATION, CONDITION, DESIGN OR PURPOSE.

**KNEER AND ROBINSON EXTENSION INTERCOUNTY DRAIN
GRATIOT AND MONTCALM COUNTIES, MICHIGAN**

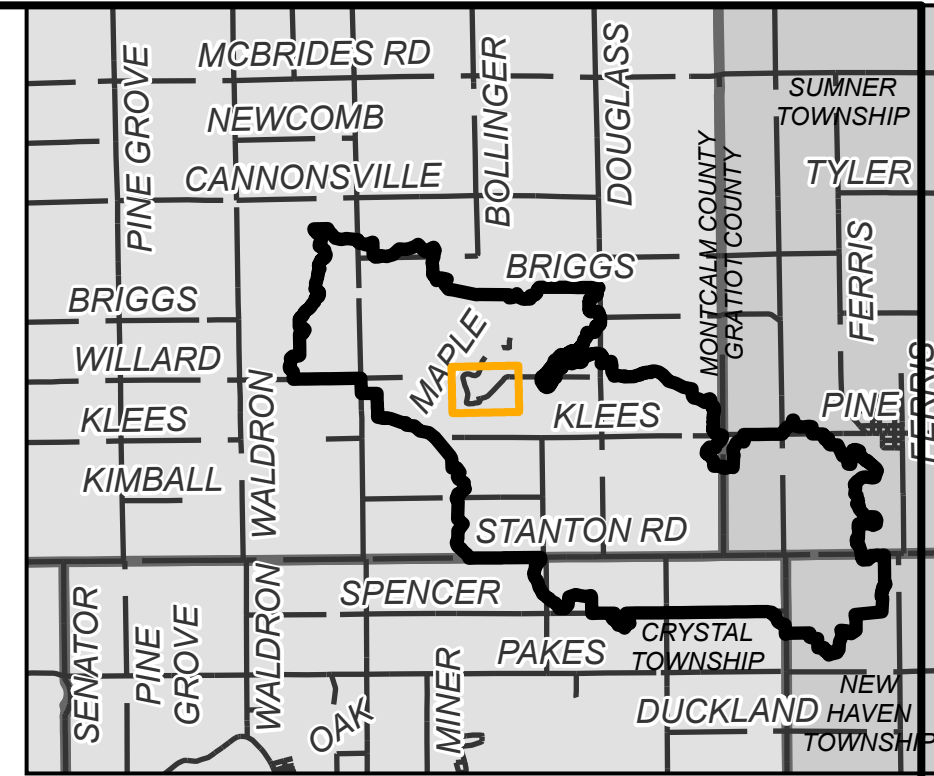
DRAINAGE DISTRICT MAP

ST. JOHN'S OFFICE
1400 Zeeb Drive
St. Johns, MI 48879
Tel: 989-224-2355
www.SpicerGroup.com

DE BY: MKT	CH BY: MKT	PROJECT NO.
DR BY: MKT	APP BY: PLF	126323SG2018
STDS.	SHEET 3 OF 7	DR 3
DATE SEPTEMBER 2019	FILE NO.	
SCALE 1"=100'		

KNEER AND ROBINSON EXTENSION INTERCOUNTY DRAIN MONTCALM COUNTY, MICHIGAN

MICHIGAN DEPARTMENT OF AGRICULTURE AND RURAL DEVELOPMENT - BRADY HARRINGTON, P.E.
GRATIOT COUNTY DRAIN COMMISSIONER - BERNARD J. BARNES
MONTCALM COUNTY DRAIN COMMISSIONER - SANDY RAINES



AREA MAP
NOT TO SCALE



LEGEND

- DRAINAGE DISTRICT BOUNDARY
- APPROXIMATE OPEN DRAIN LOCATION
- APPROXIMATE TILE DRAIN LOCATION
- OTHER DRAINS
- OTHER WATERCOURSES
- STATE ROADS
- COUNTY ROADS
- LOCAL ROADS
- RAILROAD
- MUNICIPALITY BOUNDARY
- COUNTY BOUNDARY

DRAINAGE DISTRICT BREAKDOWN PROPERTY OWNERS ASSESSABLE ACREAGE

GRATIOT COUNTY	
NEW HAVEN TOWNSHIP	331.43 AC.
SUMNER TOWNSHIP	709.52 AC.
MONTCALM COUNTY	
CRYSTAL TOWNSHIP	601.95 AC.
FERRIS TOWNSHIP	3,605.43 AC.
TOTAL ACREAGE IN DISTRICT	5,248.33 AC.

LENGTH OF DRAIN
KNEER AND ROBINSON EXTENSION INTERCOUNTY DRAIN 11,274 FT.

20% GRATIOT COUNTY
80% MONTCALM COUNTY

DAY OF REVIEW OF DRAINAGE DISTRICT BOUNDARY:

DATE: _____
APPROVED: _____

BRADY HARRINGTON, P.E.
INTERCOUNTY DRAINAGE BOARD CHAIRMAN

PLF	DAY OF REVIEW OF APPOINTMENTS	03/26/2019
BY	MARK	REVISIONS
		DATE

THE WORK REPRESENTED BY THIS DRAWING WAS DESIGNED BY THE ENGINEER FOR THIS SPECIFIC APPLICATION AND SPECIFIC LOCATION DESCRIBED HEREON IN ACCORDANCE WITH THE CONDITIONS PREVALENT AT THE TIME THE DESIGN WAS DONE. THE ENGINEER DOES NOT GUARANTEE AND WILL NOT BE LIABLE FOR ANY OTHER LOCATION, CONDITION, DESIGN OR PURPOSE.

KNEER AND ROBINSON EXTENSION INTERCOUNTY DRAIN
GRATIOT AND MONTCALM COUNTIES, MICHIGAN

DRAINAGE DISTRICT MAP

ST. JOHN'S OFFICE
1400 Zeeb Drive
St. Johns, MI 48879
Tel. 989-224-2355
www.SpicerGroup.com

DE BY: MKT	CH BY: MKT	PROJECT NO.
DR BY: MKT	APP BY: PLF	126323SG2018

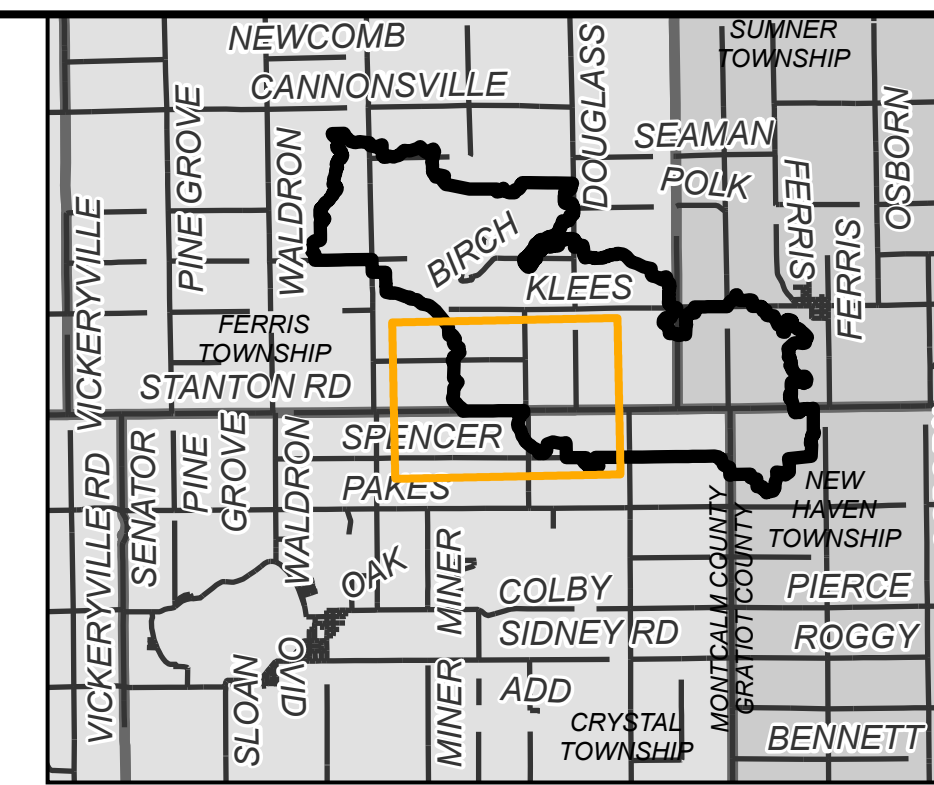
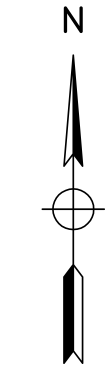
STDS.	SHEET 4 OF 7	DR
DATE SEPTEMBER 2019	FILE NO.	4
SCALE 1"=100'		

KNEER AND ROBINSON EXTENSION INTERCOUNTY DRAIN

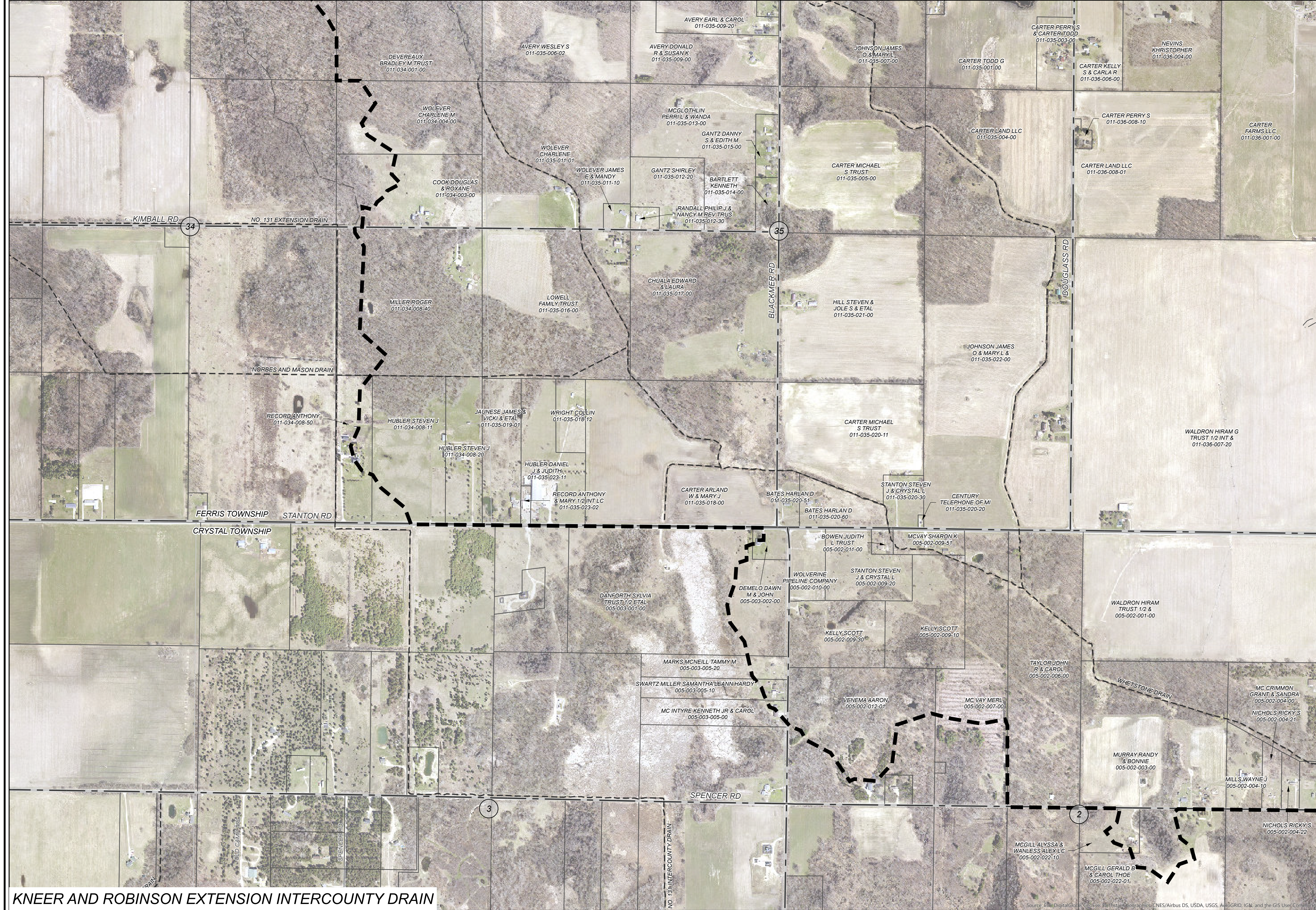
PATH: C:\USER\MATCH\THEENGINEER\SPICER GROUP\PROJECTS\MONTCALM\KNEER AND ROBINSON EXTENSION INTERCOUNTY DRAIN\MONTCALM\KNEER AND ROBINSON EXTENSION INTERCOUNTY DRAIN.DWG, PRINTED ON 9/20/2019, BY MATCH-THE-EN

KNEER AND ROBINSON EXTENSION INTERCOUNTY DRAIN MONTCALM COUNTY, MICHIGAN

MICHIGAN DEPARTMENT OF AGRICULTURE AND RURAL DEVELOPMENT - BRADY HARRINGTON, P.E.
GRATIOT COUNTY DRAIN COMMISSIONER - BERNARD J. BARNES
MONTCALM COUNTY DRAIN COMMISSIONER - SANDY RAINES



AREA MAP
NOT TO SCALE



- LEGEND**
- DRAINAGE DISTRICT BOUNDARY
 - APPROXIMATE OPEN DRAIN LOCATION
 - APPROXIMATE TILE DRAIN LOCATION
 - OTHER DRAINS
 - OTHER WATERCOURSES
 - STATE ROADS
 - COUNTY ROADS
 - LOCAL ROADS
 - RAILROAD
 - MUNICIPALITY BOUNDARY
 - COUNTY BOUNDARY

DRAINAGE DISTRICT BREAKDOWN
PROPERTY OWNERS ASSESSABLE ACREAGE

GRATIOT COUNTY	
NEW HAVEN TOWNSHIP	331.43 AC.
SUMNER TOWNSHIP	709.52 AC.
MONTCALM COUNTY	
CRYSTAL TOWNSHIP	601.95 AC.
FERRIS TOWNSHIP	3,605.43 AC.
TOTAL ACREAGE IN DISTRICT	5,248.33 AC.

LENGTH OF DRAIN
KNEER AND ROBINSON EXTENSION INTERCOUNTY DRAIN 11,274 FT.

20% GRATIOT COUNTY
80% MONTCALM COUNTY

DAY OF REVIEW OF DRAINAGE DISTRICT BOUNDARY:

DATE: _____
APPROVED: _____

BRADY HARRINGTON, P.E.
INTERCOUNTY DRAINAGE BOARD CHAIRMAN

PLF	MARK	DAY OF REVIEW OF APPOINTMENTS	03/26/2019
BY	MARK	REVISIONS	DATE

THE WORK REPRESENTED BY THIS DRAWING WAS DESIGNED BY THE ENGINEER FOR THIS SPECIFIC APPLICATION AND SPECIFIC LOCATION DESCRIBED HEREON IN ACCORDANCE WITH THE CONDITIONS PREVALENT AT THE TIME THE DESIGN WAS DONE. THE ENGINEER DOES NOT GUARANTEE AND WILL NOT BE LIABLE FOR ANY OTHER LOCATION, CONDITION, DESIGN OR PURPOSE.

KNEER AND ROBINSON EXTENSION INTERCOUNTY DRAIN
GRATIOT AND MONTCALM COUNTIES, MICHIGAN

DRAINAGE DISTRICT MAP

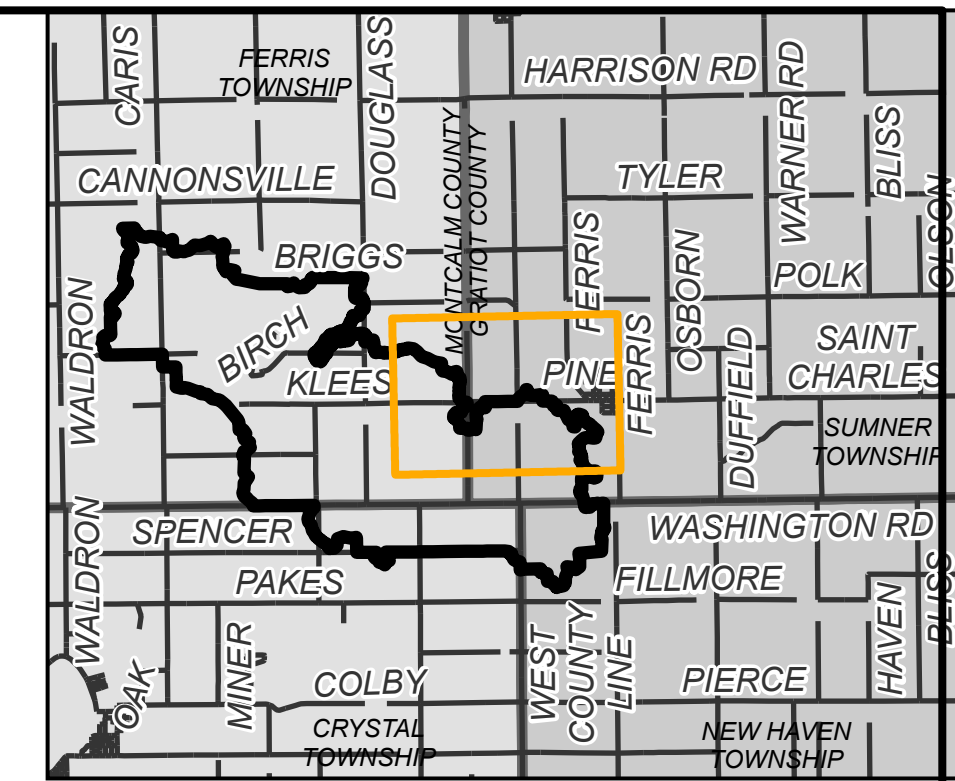
ST. JOHN'S OFFICE
1400 Zeeb Drive
St. Johns, MI 48879
Tel. 989-224-2355
www.SpicerGroup.com

DE BY: MKT	CH BY: MKT	PROJECT NO.
DR BY: MKT	APP BY: PLF	126323SG2018
STDS.	SHEET 5 OF 7	DR 5
DATE: SEPTEMBER 2019	FILE NO.	SCALE 1"=400'

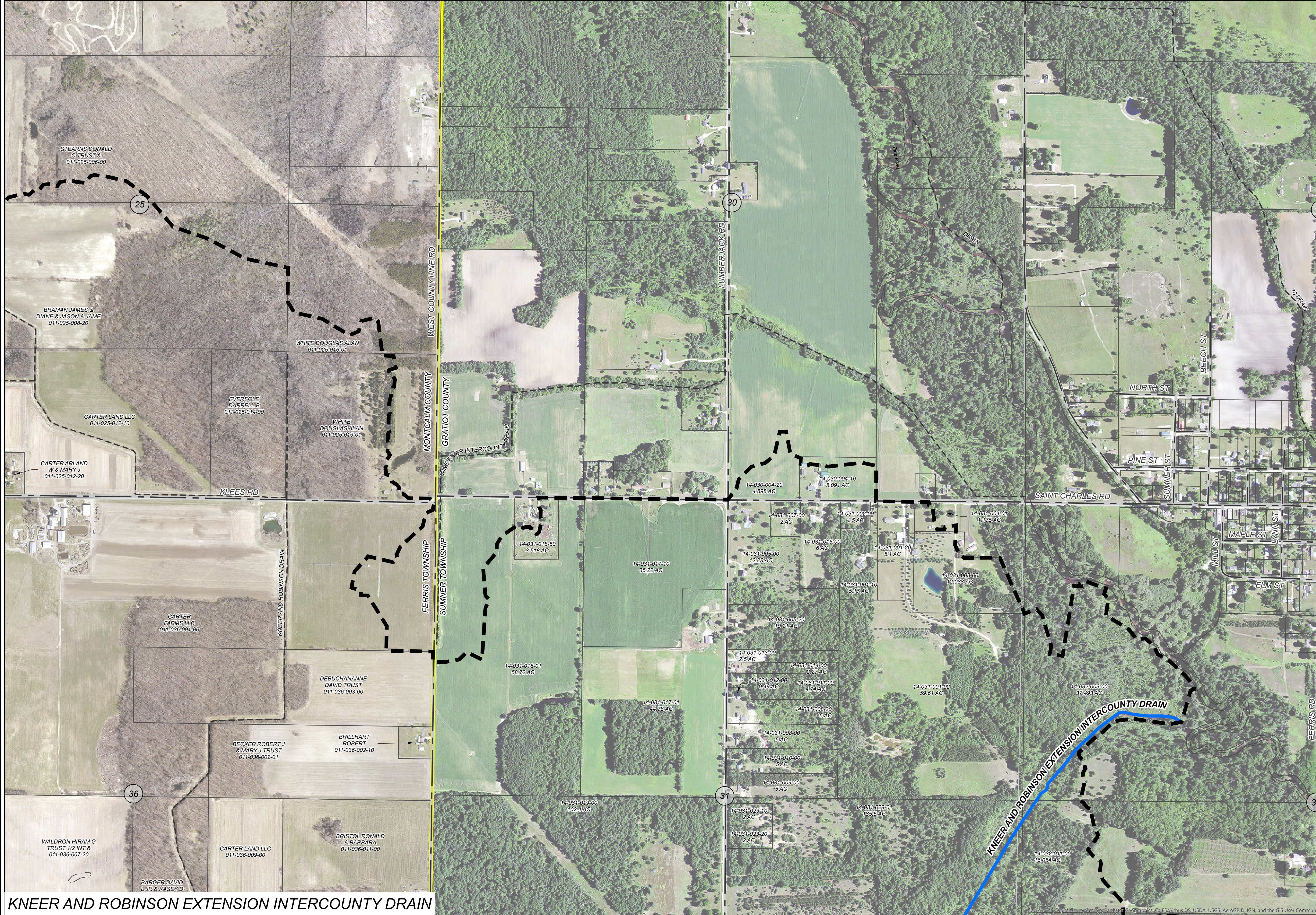
PATH: C:\USER\MATCH\THEIR\DRAWINGS\MONTCALM\COUNTY\MONTCALM\DRAWINGS\CSWIFETS\AREA_PRINTED_ON_802019.BY: MATCH\THEIR

KNEER AND ROBINSON EXTENSION INTERCOUNTY DRAIN MONTCALM COUNTY, MICHIGAN

MICHIGAN DEPARTMENT OF AGRICULTURE AND RURAL DEVELOPMENT - BRADY HARRINGTON, P.E.
GRATIOT COUNTY DRAIN COMMISSIONER - BERNARD J. BARNES
MONTCALM COUNTY DRAIN COMMISSIONER - SANDY RAINES



AREA MAP
NOT TO SCALE



LEGEND

- DRAINAGE DISTRICT BOUNDARY
- APPROXIMATE OPEN DRAIN LOCATION
- APPROXIMATE TILE DRAIN LOCATION
- OTHER DRAINS
- OTHER WATERCOURSES
- STATE ROADS
- COUNTY ROADS
- LOCAL ROADS
- RAILROAD
- MUNICIPALITY BOUNDARY
- COUNTY BOUNDARY

DRAINAGE DISTRICT BREAKDOWN PROPERTY OWNERS ASSESSABLE ACREAGE

GRATIOT COUNTY	
NEW HAVEN TOWNSHIP	331.43 AC.
SUMMER TOWNSHIP	709.52 AC.
MONTCALM COUNTY	
CRYSTAL TOWNSHIP	601.95 AC.
FERRIS TOWNSHIP	3,605.43 AC.
TOTAL ACREAGE IN DISTRICT	5,248.33 AC.

LENGTH OF DRAIN
KNEER AND ROBINSON EXTENSION INTERCOUNTY DRAIN 11,274 FT.

20% GRATIOT COUNTY
80% MONTCALM COUNTY

DAY OF REVIEW OF DRAINAGE
DISTRICT BOUNDARY:

DATE: _____
APPROVED: _____

BRADY HARRINGTON, P.E.
INTERCOUNTY DRAINAGE BOARD CHAIRMAN

PLF	MARK	DAY OF REVIEW OF APPOINTMENTS	03/26/2019
BY	MARK	REVISIONS	DATE

THE WORK REPRESENTED BY THIS DRAWING WAS DESIGNED BY THE ENGINEER FOR THIS SPECIFIC APPLICATION AND SPECIFIC LOCATION DESCRIBED HEREON IN ACCORDANCE WITH THE CONDITIONS PREVALENT AT THE TIME THE DESIGN WAS DONE. THE ENGINEER DOES NOT GUARANTEE AND WILL NOT BE LIABLE FOR ANY OTHER LOCATION, CONDITION, DESIGN OR PURPOSE.

KNEER AND ROBINSON EXTENSION INTERCOUNTY DRAIN
GRATIOT AND MONTCALM COUNTIES, MICHIGAN

DRAINAGE DISTRICT MAP

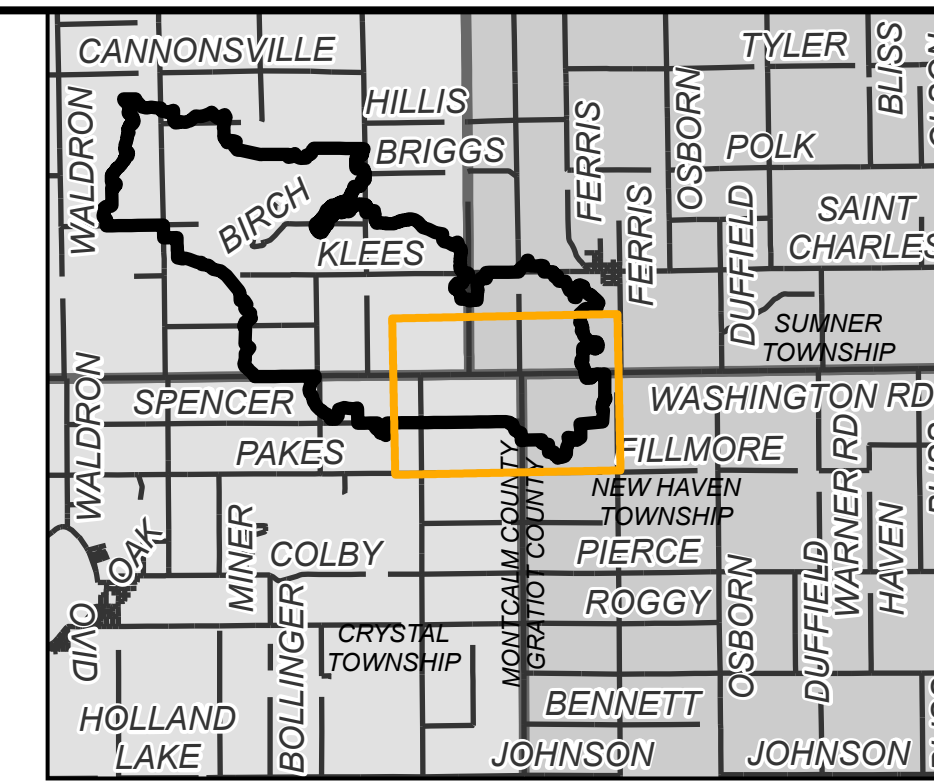
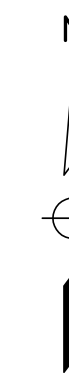
ST. JOHN'S OFFICE
1400 Zeeb Drive
St. Johns, MI 48879
Tel. 989-224-2355
www.SpicerGroup.com

DE BY: MKT	CH BY: MKT	PROJECT NO.
DR BY: MKT	APP BY: PLF	126323SG2018
STDS.	SHEET 6 OF 7	DR 6
DATE: SEPTEMBER 2019	FILE NO.	
SCALE: 1"=400'		

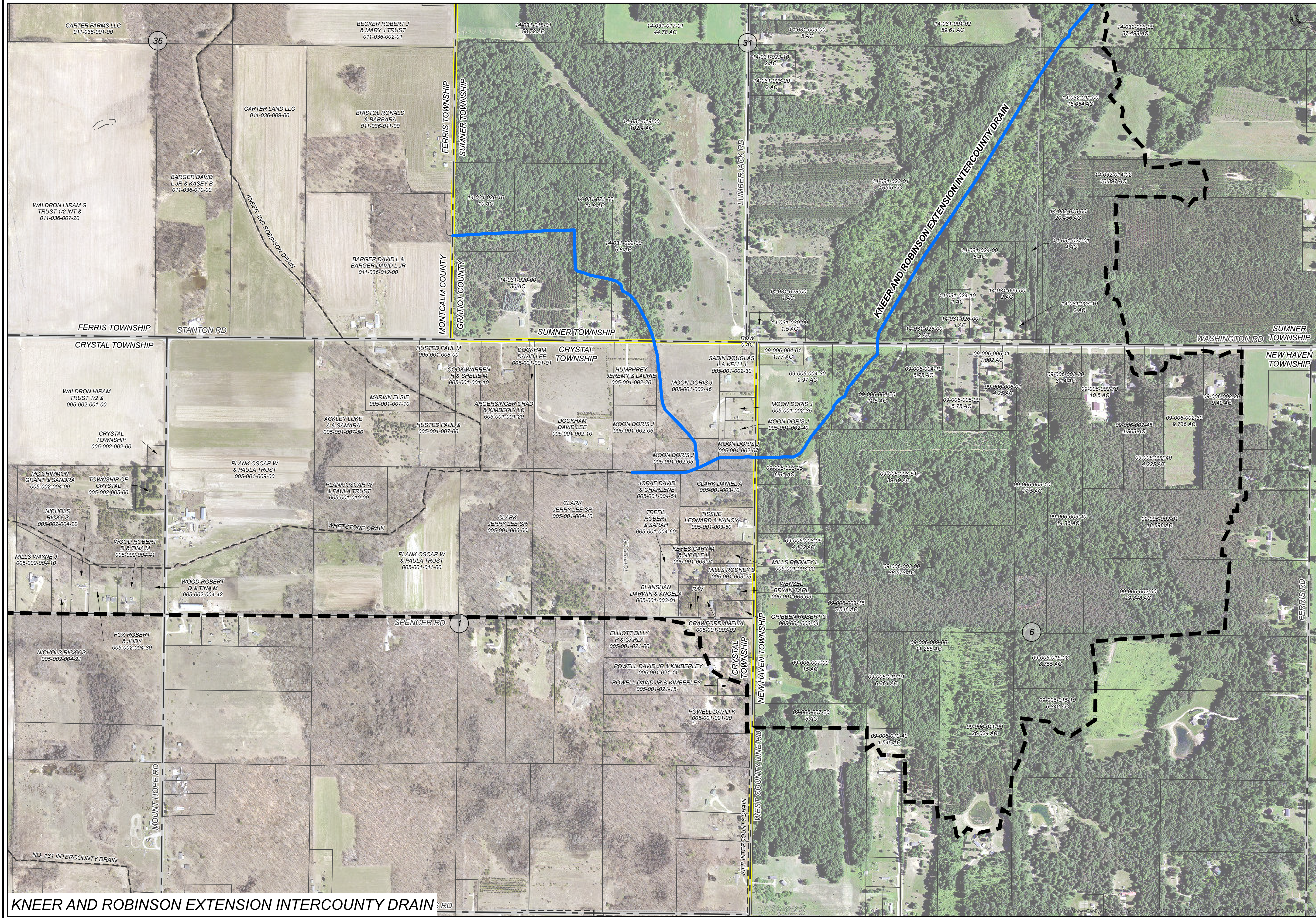
PATH: C:\USERS\MATCH\THEENGINEER\DRAWINGS\MONTCALM\COUNTY\MONTCALM\DRAWINGS\COMMENTS\PRINTED ON 8/20/2019 BY MATCH\THEEN

KNEER AND ROBINSON EXTENSION INTERCOUNTY DRAIN MONTCALM COUNTY, MICHIGAN

MICHIGAN DEPARTMENT OF AGRICULTURE AND RURAL DEVELOPMENT - BRADY HARRINGTON, P.E.
GRATIOT COUNTY DRAIN COMMISSIONER - BERNARD J. BARNES
MONTCALM COUNTY DRAIN COMMISSIONER - SANDY RAINES



AREA MAP
NOT TO SCALE



- LEGEND**
- DRAINAGE DISTRICT BOUNDARY
 - APPROXIMATE OPEN DRAIN LOCATION
 - APPROXIMATE TILE DRAIN LOCATION
 - OTHER DRAINS
 - OTHER WATERCOURSES
 - STATE ROADS
 - COUNTY ROADS
 - LOCAL ROADS
 - RAILROAD
 - MUNICIPALITY BOUNDARY
 - COUNTY BOUNDARY

DRAINAGE DISTRICT BREAKDOWN
PROPERTY OWNERS ASSESSABLE ACREAGE

GRATIOT COUNTY	
NEW HAVEN TOWNSHIP	331.43 AC.
SUMMER TOWNSHIP	709.52 AC.
MONTCALM COUNTY	
CRYSTAL TOWNSHIP	601.95 AC.
FERRIS TOWNSHIP	3,605.43 AC.
TOTAL ACREAGE IN DISTRICT	5,248.33 AC.

LENGTH OF DRAIN
KNEER AND ROBINSON EXTENSION INTERCOUNTY DRAIN 11,274 FT.

20% GRATIOT COUNTY
80% MONTCALM COUNTY

DAY OF REVIEW OF DRAINAGE DISTRICT BOUNDARY:

DATE: _____
APPROVED: _____

BRADY HARRINGTON, P.E.
INTERCOUNTY DRAINAGE BOARD CHAIRMAN

PLF	MARK	DAY OF REVIEW OF APPOINTMENTS	03/26/2019
BY	MARK	REVISIONS	DATE

THE WORK REPRESENTED BY THIS DRAWING WAS DESIGNED BY THE ENGINEER FOR THIS SPECIFIC APPLICATION AND SPECIFIC LOCATION DESCRIBED HEREON IN ACCORDANCE WITH THE CONDITIONS PREVALENT AT THE TIME THE DESIGN WAS DONE. THE ENGINEER DOES NOT GUARANTEE AND WILL NOT BE LIABLE FOR ANY OTHER LOCATION, CONDITION, DESIGN OR PURPOSE.

KNEER AND ROBINSON EXTENSION INTERCOUNTY DRAIN
GRATIOT AND MONTCALM COUNTIES, MICHIGAN

DRAINAGE DISTRICT MAP

Spicer group 75 YEARS
ST. JOHN'S OFFICE
1400 Zeeb Drive
St. Johns, MI 48879
Tel. 989-224-2355
www.SpicerGroup.com

DE BY: MKT	CH BY: MKT	PROJECT NO.
DR BY: MKT	APP BY: PLF	126323SG2018

STDS.	SHEET 7 OF 7	DR 7
DATE: SEPTEMBER 2019	FILE NO.	
SCALE: 1"=400'		

PATH: C:\USER\MATCH\THEENGINEER\MONTCALM\COUNTY\DOCUMENTS\COUNTY_GIS\MONTCALM\CADD\MONTCALM\DWG\DWG\SPENCER_SPLINE_LAYER_PRINTED_ON_8/20/2019_BY_MATCH.THEEN