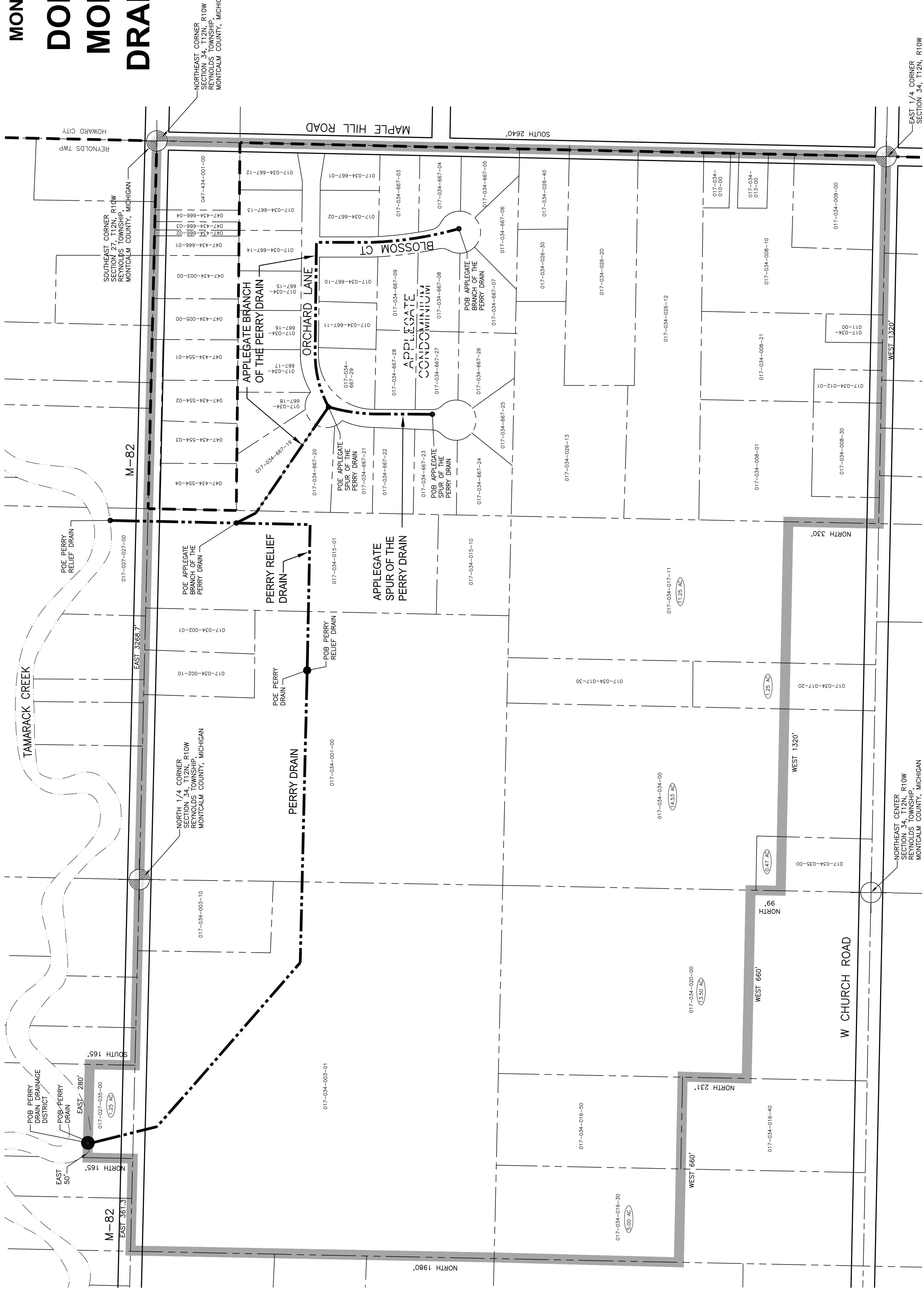


Drawn By	MEZ
Designer	KJV
Reviewer	CES
Manager	DFZ

Hard copy is intended to be 24"x36" when plotted. Scale(s) indicated and graphic quality may not be accurate for any other size.

PROJECT NO.  
**G080013AD**  
SHEET NO.

**PERRY DRAIN**  
REYNOLDS TOWNSHIP AND  
HOWARD CITY,  
MONTCALM COUNTY, MICHIGAN  
**DONALD E. COOPER**  
MONTCALM COUNTY  
DRAIN COMMISSIONER

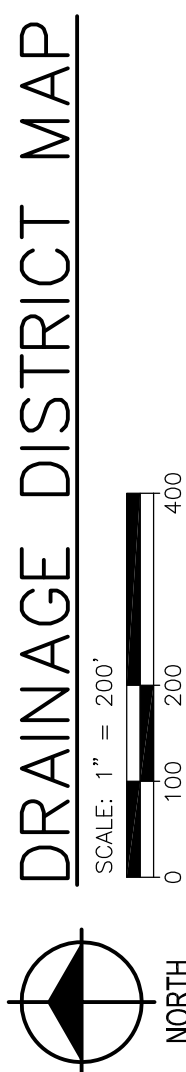
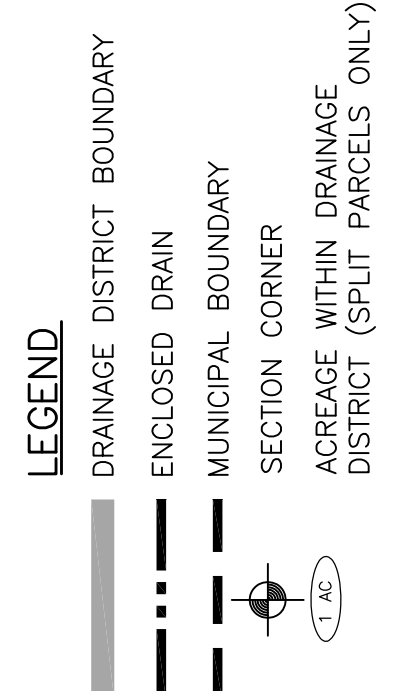


**DRAINAGE DISTRICT DESCRIPTION**  
ALL OF THAT LAND LOCATED IN SECTIONS 34 AND 27, T12N, R10W, REYNOLDS TOWNSHIP, MONTCALM COUNTY, MICHIGAN BOUNDED BY A LINE DESCRIBED AS FOLLOWS:  
COMMENCING AT THE SOUTHEAST CORNER OF SECTION 27, T12N, R10W, THENCE NORTH 165 FEET, MORE OR LESS, TO TAMARACK CREEK AND THE POINT THERE NORTH 165 FEET, MORE OR LESS, TO TAMARACK CREEK AND THE POINT THERE EAST 280 FEET;  
THENCE SOUTH 165 FEET, MORE OR LESS, TO THE NORTH LINE OF SECTION 34, T12N, R10W, REYNOLDS TOWNSHIP, SAID SECTION 34, EAST 3268.7 FEET, MORE OR LESS, TO THE NORTHEAST CORNER OF SAID SECTION 34;  
THENCE ALONG THE EAST LINE OF SAID SECTION 34, SOUTH 2640 FEET, MORE OR LESS, TO THE EAST 1/4 CORNER OF SAID SECTION 34;  
THENCE NORTH 330 FEET;  
THENCE WEST 1320 FEET;  
THENCE WEST 660 FEET;  
THENCE NORTH 231 FEET;  
THENCE WEST 660 FEET;  
THENCE NORTH 330 FEET, MORE OR LESS TO THE SOUTH LINE OF SECTION 27, T12N, R10W, REYNOLDS TOWNSHIP, SAID SECTION 27, EAST 361.3 FEET;  
THENCE ALONG THE SOUTH LINE OF SAID SECTION 27, EAST 361.3 FEET;  
THENCE EAST 50 FEET, MORE OR LESS, TO THE POINT OF BEGINNING;  
TOTAL ACREAGE IN DRAINAGE DISTRICT IS 215 ACRES MORE OR LESS.

**ACREAGE BY GOVERNMENTAL UNIT**

REYNOLDS TWP	205 ACRES
HOWARD CITY	10 ACRES
<b>TOTAL</b>	<b>215 ACRES</b>

INCLUDING:  
COUNTY ROAD ROW 8 ACRES



**DRAINAGE DISTRICT MAP**